



Appendix – Waste and Recycling

Figure 1. The graph below shows the number of reported missed refuse and recycling collections. The 2014-15 missed collection contractual target is 90 per 100,000 properties.

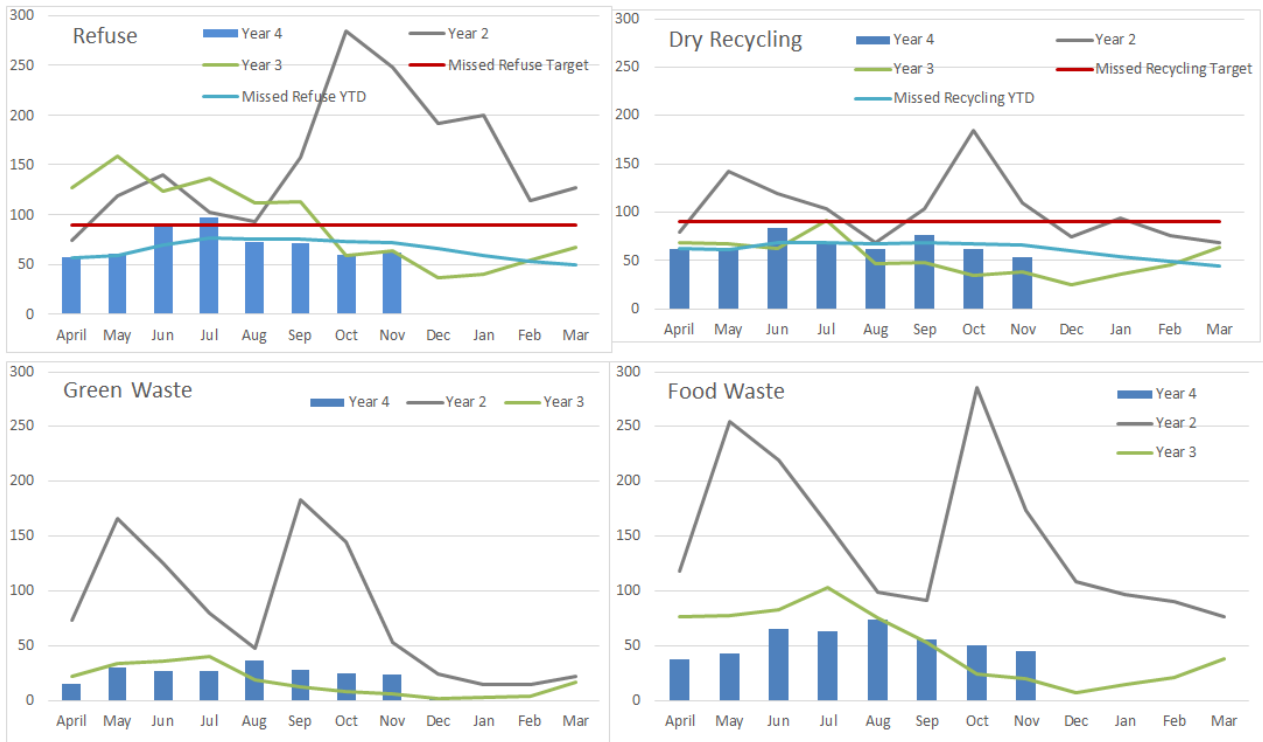




Figure 2. The graph below shows the monthly numbers of waste collection complaints reported to the Veolia Contact Centre from year 2 (2012-13) of the contract to year 4 (2014-15).

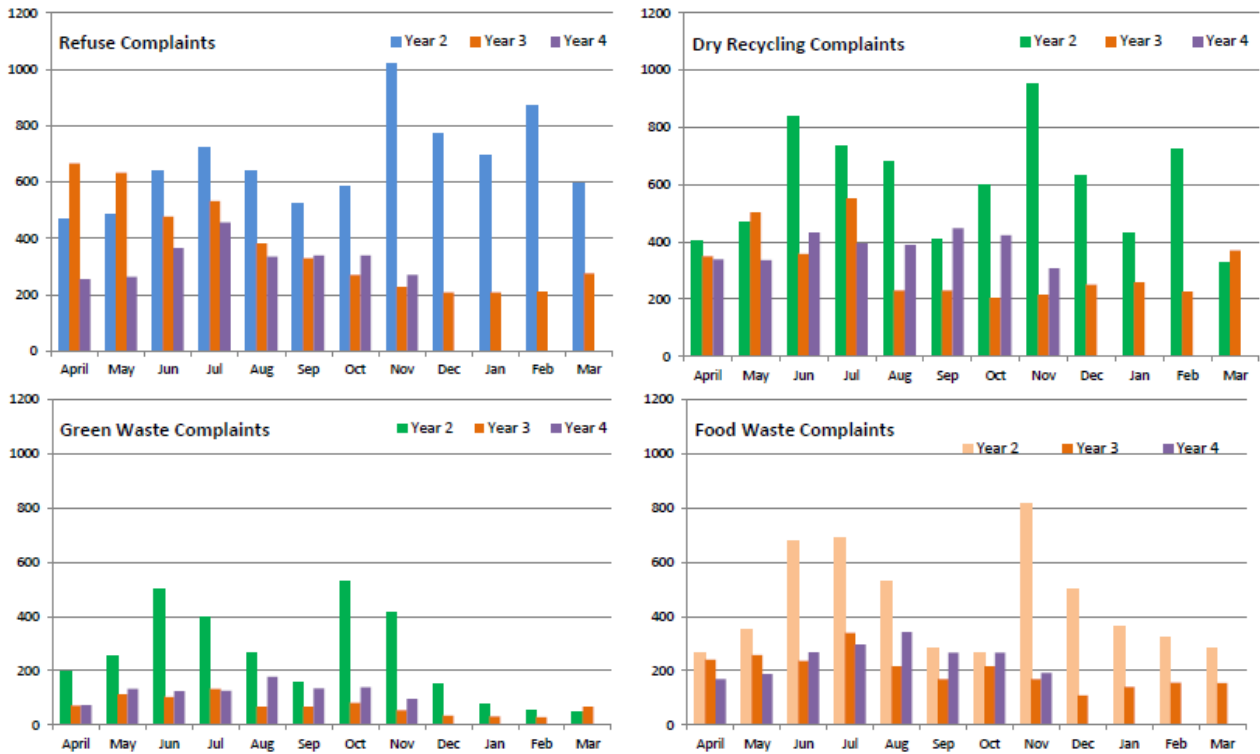


Figure 3. The graph below shows the recycling performance from April 2013 to December 2014.

